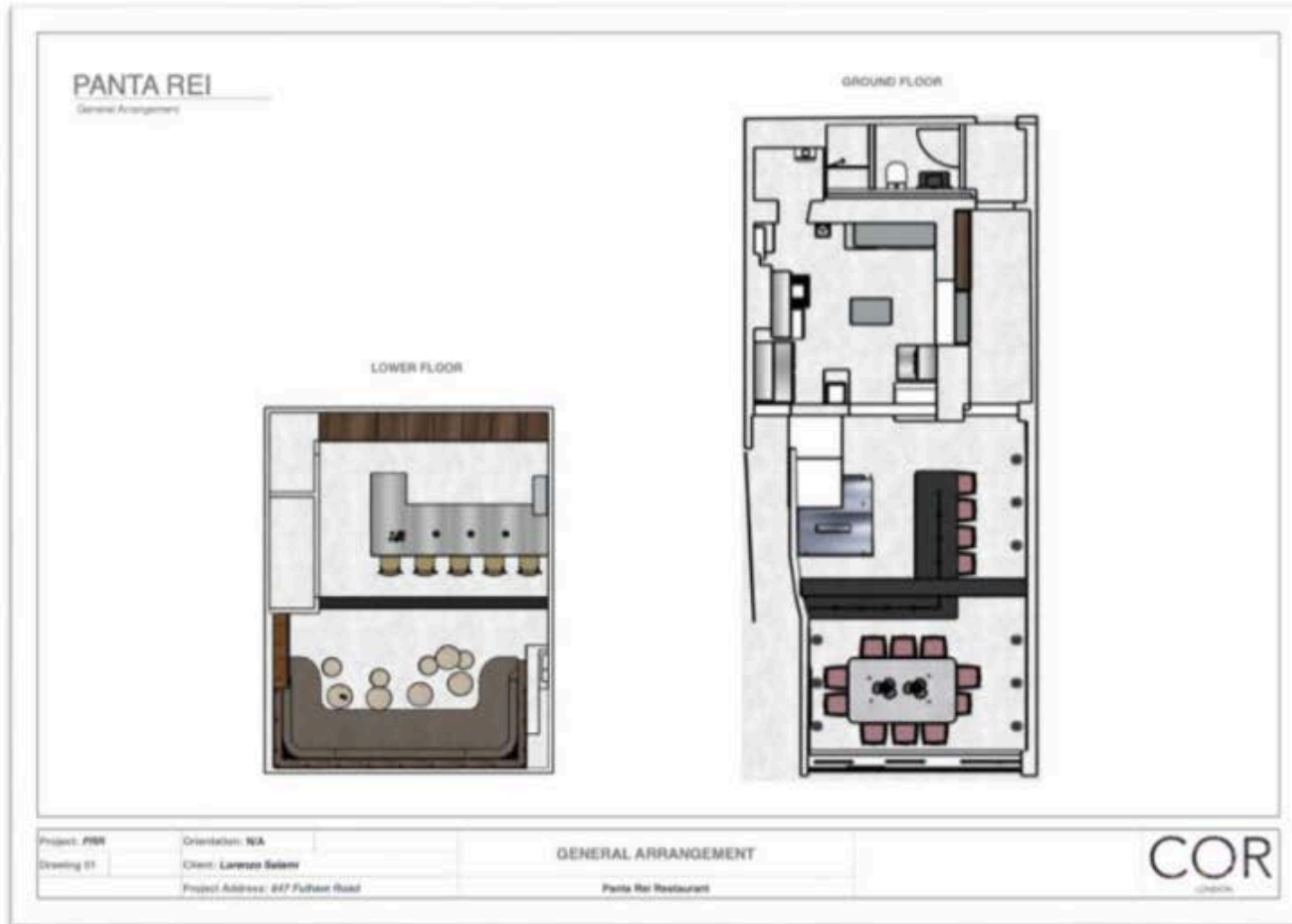


Panta Rei

647 Fulham Road

COR
LONDON

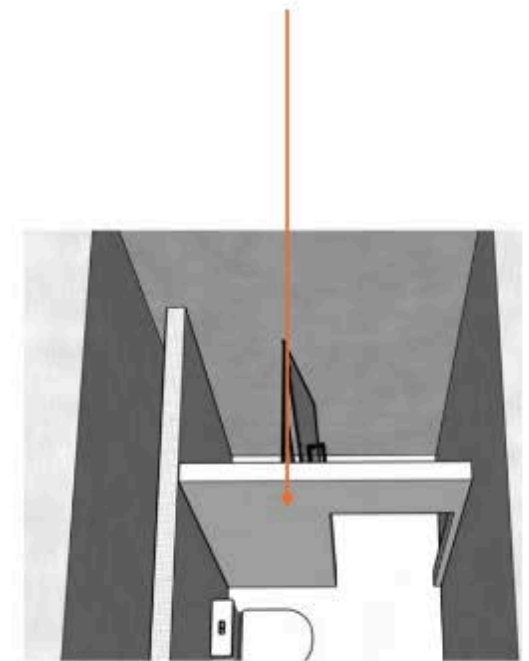
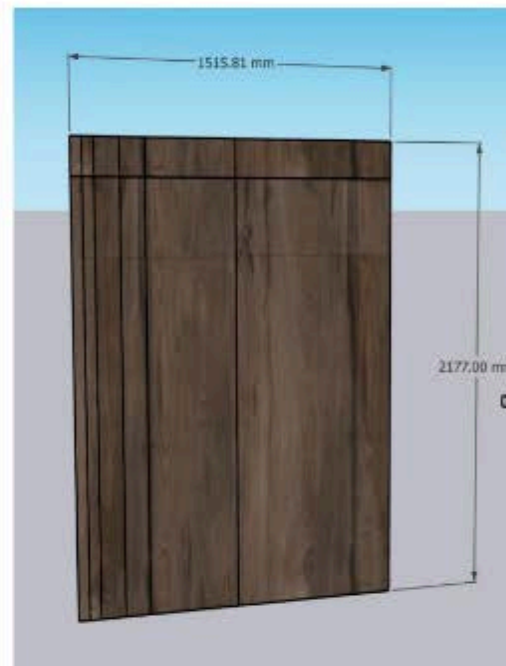
GA Drawing



Bathroom



- Measurements are approximate
- Should look seamless from the bathroom side as though it is a wall panel, hiding a door to the shower room
- Finish to be confirmed but probably H3710 ST12 – Egger Board
- Door mechanism and lock to be supplied by contractor



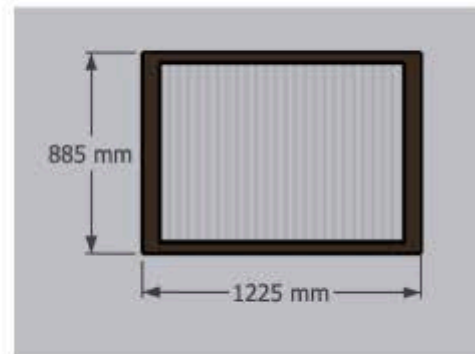
Corridor



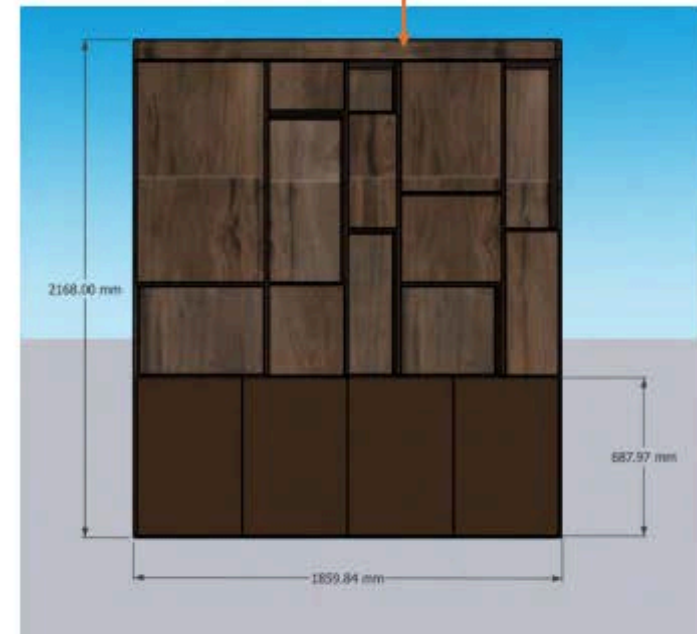
Corridor



- Custom joinery of roughly 1860W x 2170H x 300D mm
- Finish to be confirmed but probably H3710 ST12 – Egger Board
- Pass window with fluted glass film

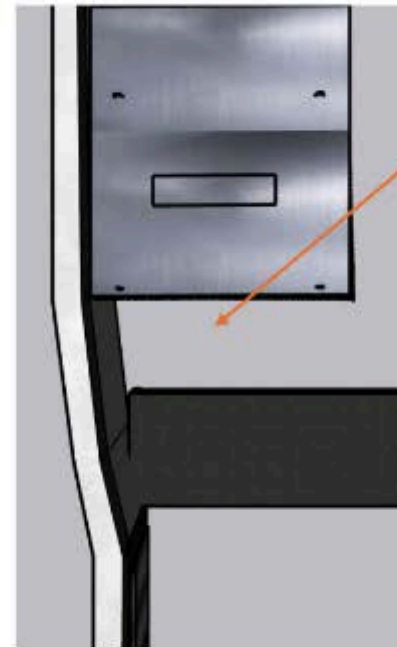


- Reeded film to be installed to give the fluted finish to it - <https://www.glassfilms.eu/product/glass-films/patterned-window-film/striped-window-film/sx-1254-reeded-glass/>

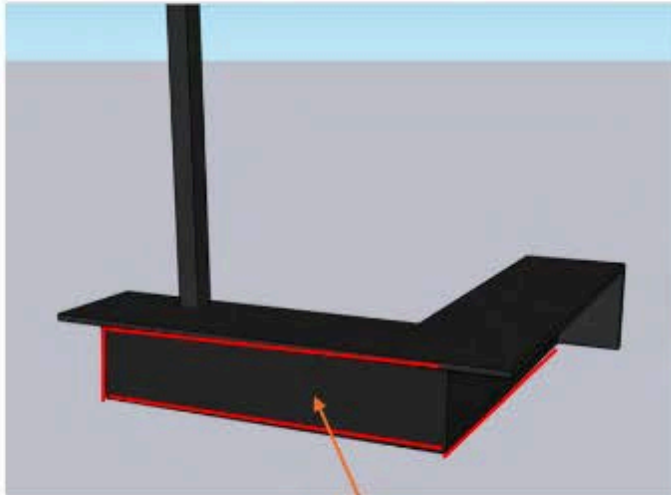




- Custom L shape counter
- MDF base
 - Black lacquer on the outside
 - White laminate on the inside
- Dekton worktop and waterfall drop in one side (this will be supplied by COR)
- Awkward corner



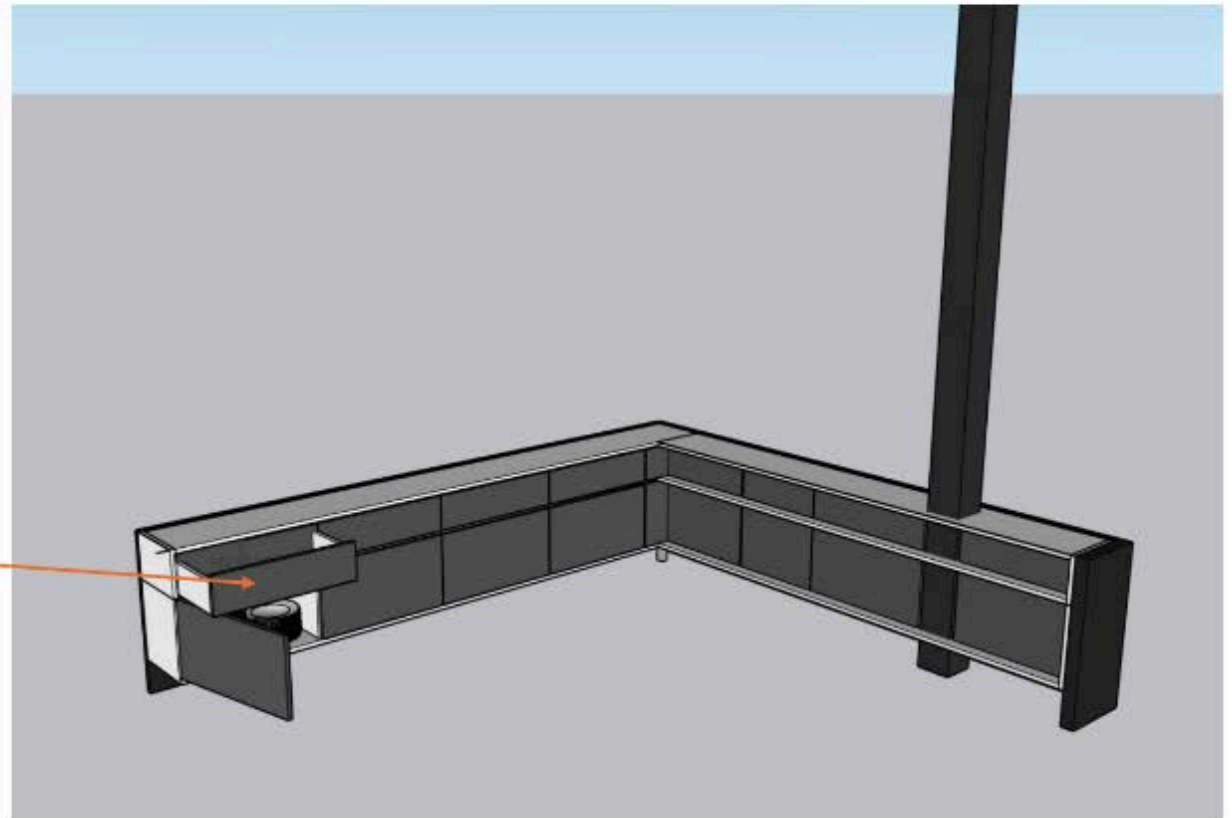
FOH - Counter Unit



- Finishes:
- Timber painted in black on the outside panel
- Dark grey Egger Board on the drawers and storage fronts
- White Egger Board on the interiors

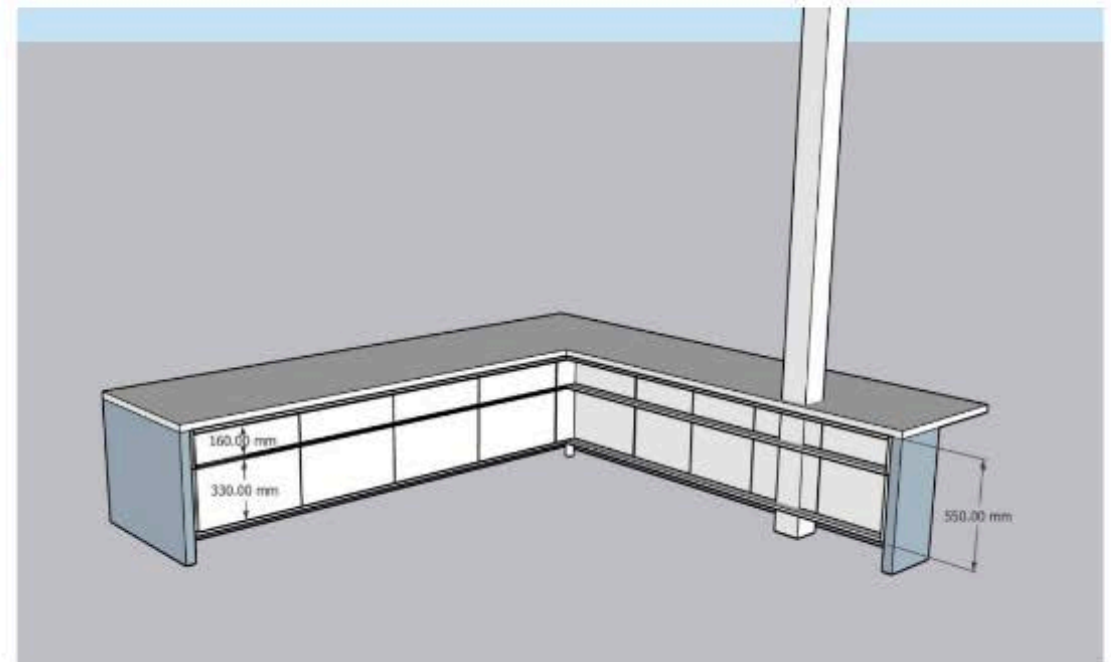
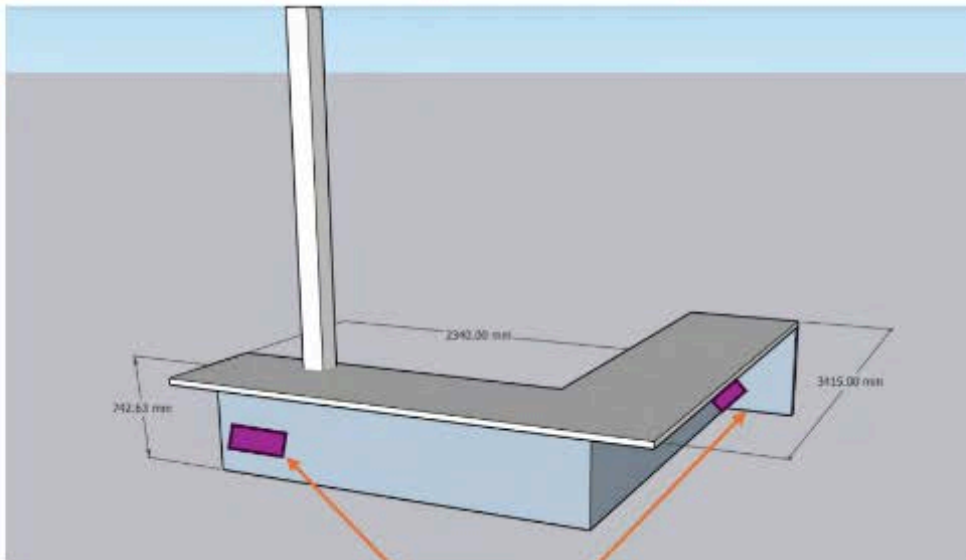


- Drawers on the top row
- Plate storage below
- Corner storage





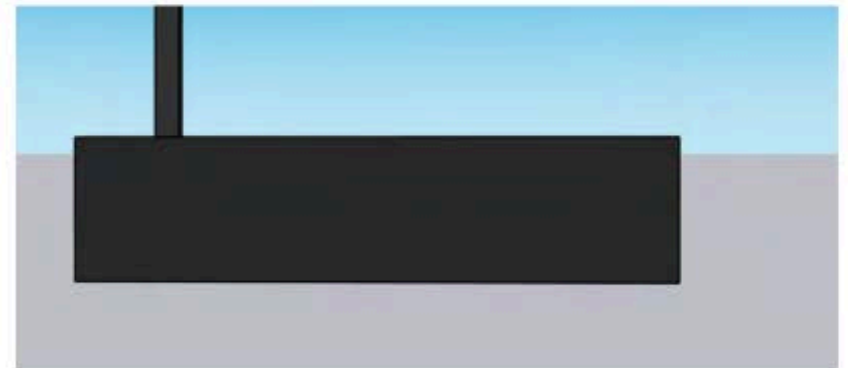
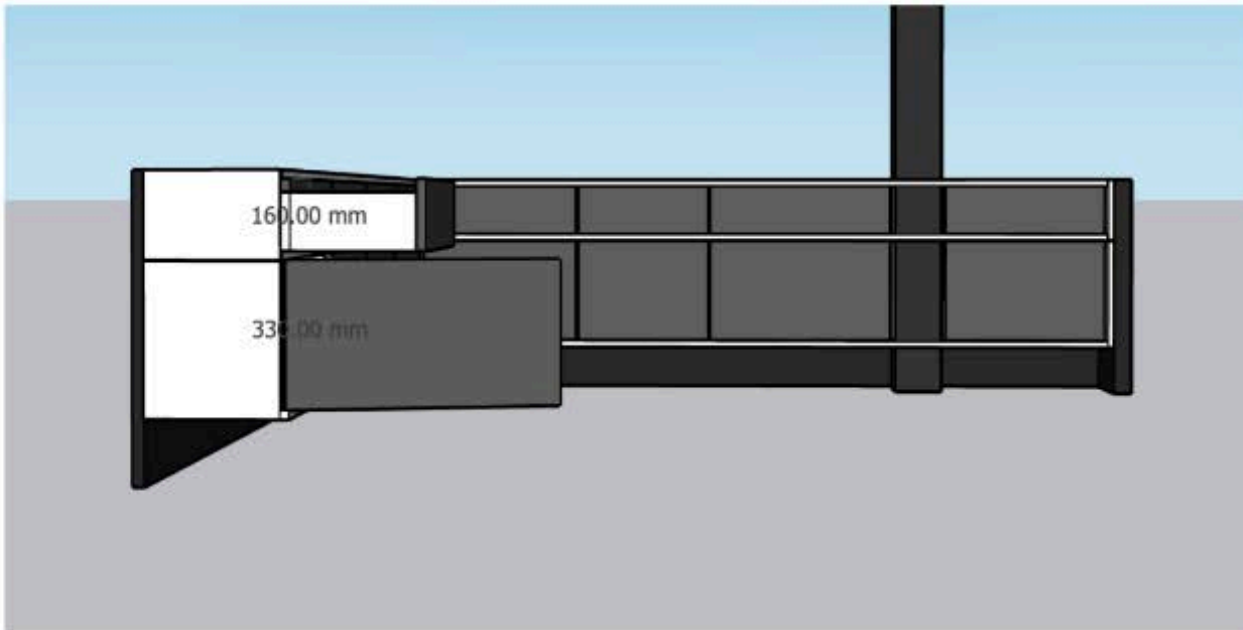
• Approximate measurements

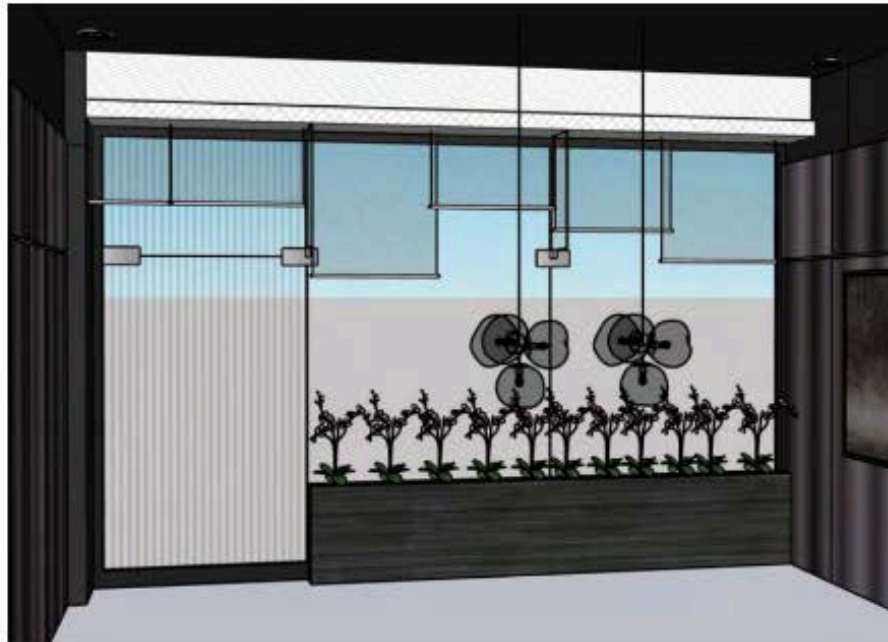


- We out require two sockets to be installed on the face of the outside panel
- These can be below the drawer level (kick toe) from the other side. A protective casing on the back side will be required



- Carcass side and back view
- Supply and fit required





Planter

- Approximate measurements: 3000W x 600H x 140D mm)
- Simple planter box with a shallow gap to insert orchid plant pots
- Made of waterproof material
- Cladded with the below material



- The material is TBC but it will likely come in thin sheets (0.5 and 1.5 mm)
- Will require to be glued to MDF (or similar) boards

COR
LONDON